

Hampton Rd between Orillia St and Wascana St

March 11, 2019 To March 15, 2019



The data presented here is for information purposes only and should not be considered authoritative for construction, geotechnical, engineering, navigational, legal, or other site-specific uses. The information shared is owned by the Transportation Division of the Engineering Department at the District of Saanich. Accuracy is not guaranteed.

Start Date: 11-Mar-19
 Start Time: 0:12
 Station ID: R0482-01

Location 1: Hampton Rd between Orillia St and Wascana St

Note: Orillia St and Wascana St

DATE:	March 11, 2019		March 12, 2019		March 13, 2019		March 14, 2019		March 15, 2019		WK AVG		WK AVG	HOURLY
	MON		TUE		WED		THURS		FRI				CH 1+2	%
Time:	EB	WB	EB	WB	EB	WB	EB	WB	EB	WB	EB	WB		
12-1 AM			1	3	0	0	0	3			0	2	2	0.4%
1-2 AM			3	2	1	1	2	1			2	1	3	0.6%
2-3 AM			1	0	1	0	0	0			1	0	1	0.1%
3-4 AM			0	0	0	0	0	0			0	0	0	0.0%
4-5 AM			1	1	1	0	0	1			1	1	1	0.2%
5-6 AM			3	3	4	2	4	1			4	2	6	1.0%
6-7 AM			4	3	2	2	4	3			3	3	6	1.0%
7-8 AM			18	7	18	7	17	6			18	7	24	4.3%
8-9 AM			25	20	26	20	25	15			25	18	44	7.6%
9-10 AM			13	16	21	6	13	8			16	10	26	4.5%
10-11 AM			6	6	10	13	18	14			11	11	22	3.9%
11-12 PM			15	11	12	12	15	7			14	10	24	4.2%
12-1 PM			21	11	18	11	22	14			20	12	32	5.7%
1-2 PM			14	18	15	11	16	18			15	16	31	5.4%
2-3 PM			22	16	25	20	19	17			22	18	40	6.9%
3-4 PM			35	24	35	23	30	20			33	22	56	9.7%
4-5 PM			22	32	29	39	34	39			28	37	65	11.4%
5-6 PM			25	38	36	29	29	35			30	34	64	11.2%
6-7 PM			15	16	27	12	25	23			22	17	39	6.9%
7-8 PM			16	13	19	15	17	17			17	15	32	5.7%
8-9 PM			10	12	10	8	22	8			14	9	23	4.1%
9-10 PM			16	6	9	5	9	9			11	7	18	3.1%
10-11 PM			6	3	3	3	6	3			5	3	8	1.4%
11-12 AM			2	3	2	2	3	0			2	2	4	0.7%
LANES			294	264	324	241	330	262			316	256	572	100.0%
TOTAL			558		565		592				580			
	MON		TUE		WED		THURS		FRI		WK AVG			

PEAK HOUR					TOTAL VEHICALS-PEAK PERIODS		2 HOUR PEAK INTERVALS				
MAX. 7 - 9 am PEAK HOUR	44	⇒	7.6%	between 8-9 AM	253	⇒	6 HR TOTAL	2 HR AM (7 - 9 AM)			
MAX. 7 - 11 am PEAK HOUR	44	⇒	7.6%	between 8-9 AM	197	⇒	4 HR TOTAL	VEH / HR	VEH / 2HR	2 HR %	
MAX. 11 am - 1 pm PEAK HOUR	32	⇒	5.7%	between 12-1 PM				7-8 AM	24	68	11.9%
MAX. 11 am - 3 pm PEAK HOUR	40	⇒	6.9%	between 2-3 PM				8-9 AM	44		
MAX. 4 - 6 pm PEAK HOUR	65	⇒	11.4%	between 4-5 PM			24 HOUR FACTORS	2 HR NOON (11 - 1 PM)			
MAX. 3 - 6 pm PEAK HOUR	65	⇒	11.4%	between 4-5 PM	2.26	⇒	6-24 HR FACT.	VEH / HR	VEH / 2HR	2 HR %	
					2.90	⇒	4-24 HR FACT.	11-12 PM	24	56	9.9%
								12-1 PM	32		
								2 HR PM (4 - 6 PM)			
								VEH / HR	VEH / 2HR	2 HR %	
								4-5 PM	65	129	22.6%
								5-6 PM	64		

Hampton Rd between Orillia St and Wascana St

Westbound

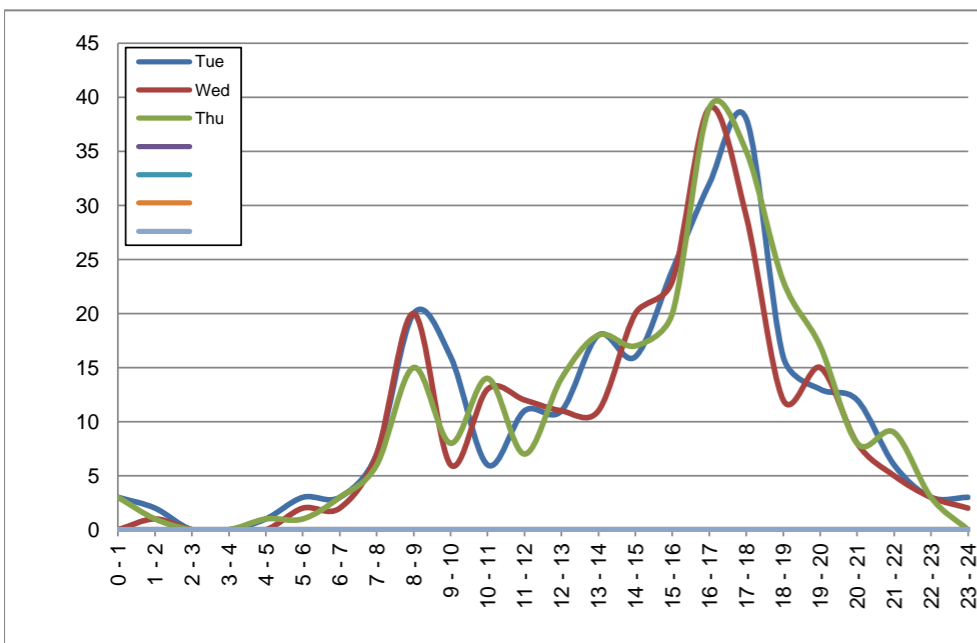
March 12, 2019 to March 14, 2019

Hourly Volumes

Time Period	Tue	Wed	Thu				
	Mar 12	Mar 13	Mar 14				
0 - 1	3	0	3				
1 - 2	2	1	1				
2 - 3	0	0	0				
3 - 4	0	0	0				
4 - 5	1	0	1				
5 - 6	3	2	1				
6 - 7	3	2	3				
7 - 8	7	7	6				
8 - 9	20	20	15				
9 - 10	16	6	8				
10 - 11	6	13	14				
11 - 12	11	12	7				
12 - 13	11	11	14				
13 - 14	18	11	18				
14 - 15	16	20	17				
15 - 16	24	23	20				
16 - 17	32	39	39				
17 - 18	38	29	35				
18 - 19	16	12	23				
19 - 20	13	15	17				
20 - 21	12	8	8				
21 - 22	6	5	9				
22 - 23	3	3	3				
23 - 24	3	2	0				
Day Total	264	241	262				

15-Minute Volumes

Time Start	Tue	Wed	Thu				
	Mar 12	Mar 13	Mar 14				
0:00	2	0	2				
0:15	0	0	0				
0:30	1	0	1				
0:45	0	0	0				
1:00	0	0	0				
1:15	0	1	1				
1:30	0	0	0				
1:45	2	0	0				
2:00	0	0	0				
2:15	0	0	0				
2:30	0	0	0				
2:45	0	0	0				
3:00	0	0	0				
3:15	0	0	0				
3:30	0	0	0				
3:45	0	0	0				
4:00	0	0	0				
4:15	0	0	1				
4:30	1	0	0				
4:45	0	0	0				
5:00	0	0	0				
5:15	0	0	0				
5:30	2	1	1				
5:45	1	1	0				
6:00	1	0	0				
6:15	2	2	3				
6:30	0	0	0				
6:45	0	0	0				
7:00	1	1	0				
7:15	2	5	2				
7:30	2	0	0				
7:45	2	1	4				
8:00	7	4	3				
8:15	4	5	5				
8:30	7	5	4				
8:45	2	6	3				
9:00	2	2	3				
9:15	7	1	0				
9:30	5	1	3				
9:45	2	2	2				
10:00	2	2	3				
10:15	1	7	6				
10:30	1	3	2				
10:45	2	1	3				
11:00	3	0	2				
11:15	0	2	2				
11:30	4	7	3				
11:45	4	3	0				
12:00	2	3	6				
12:15	2	2	2				
12:30	4	1	1				
12:45	3	5	5				
13:00	5	2	6				
13:15	4	7	4				
13:30	4	1	7				
13:45	5	1	1				
14:00	2	4	6				
14:15	5	6	3				
14:30	5	5	4				
14:45	4	5	4				
15:00	8	4	3				
15:15	5	7	7				
15:30	5	1	5				
15:45	6	11	5				
16:00	7	9	6				
16:15	5	11	11				
16:30	5	9	10				
16:45	15	10	12				
17:00	11	6	2				
17:15	13	6	17				
17:30	7	9	6				
17:45	7	8	10				
18:00	4	2	3				
18:15	3	5	6				
18:30	6	1	9				
18:45	3	4	5				
19:00	2	4	7				
19:15	5	6	3				
19:30	5	3	2				
19:45	1	2	5				
20:00	4	5	5				
20:15	2	1	1				
20:30	4	2	2				
20:45	2	0	0				
21:00	3	3	4				
21:15	2	1	0				
21:30	0	1	3				
21:45	1	0	2				
22:00	1	2	1				
22:15	0	0	1				
22:30	0	1	0				
22:45	2	0	1				
23:00	2	0	0				
23:15	1	1	0				
23:30	0	0	0				
23:45	0	1	0				



Site notes:

Hampton Rd between Orillia St and Wascana St

Eastbound

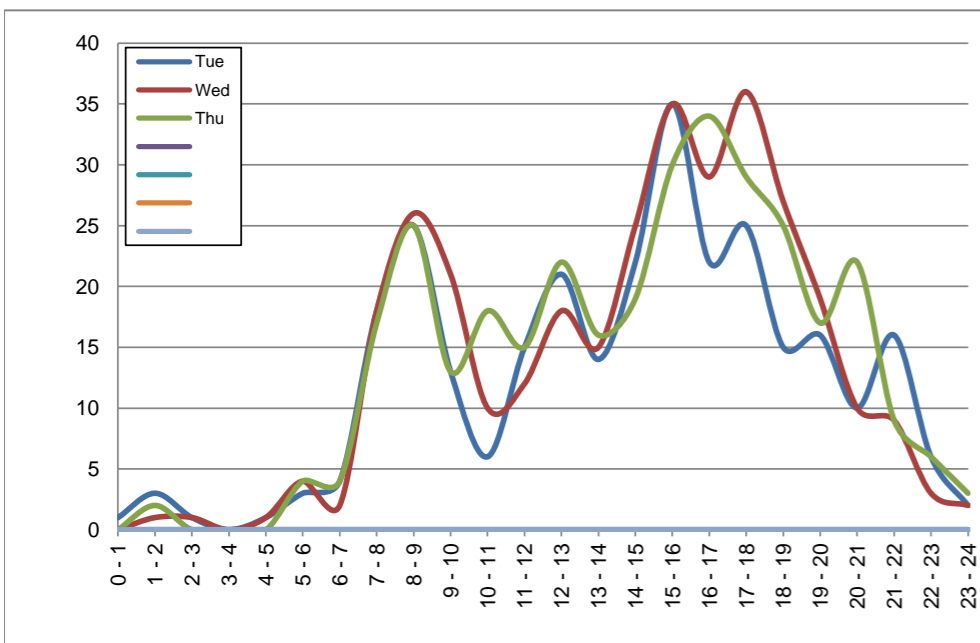
March 12, 2019 to March 14, 2019

Hourly Volumes

Time Period	Tue	Wed	Thu				
	Mar 12	Mar 13	Mar 14				
0 - 1	1	0	0				
1 - 2	3	1	2				
2 - 3	1	1	0				
3 - 4	0	0	0				
4 - 5	1	1	0				
5 - 6	3	4	4				
6 - 7	4	2	4				
7 - 8	18	18	17				
8 - 9	25	26	25				
9 - 10	13	21	13				
10 - 11	6	10	18				
11 - 12	15	12	15				
12 - 13	21	18	22				
13 - 14	14	15	16				
14 - 15	22	25	19				
15 - 16	35	35	30				
16 - 17	22	29	34				
17 - 18	25	36	29				
18 - 19	15	27	25				
19 - 20	16	19	17				
20 - 21	10	10	22				
21 - 22	16	9	9				
22 - 23	6	3	6				
23 - 24	2	2	3				
Day Total	294	324	330				

15-Minute Volumes

Time Start	Tue	Wed	Thu				
	Mar 12	Mar 13	Mar 14				
0:00	0	0	0				
0:15	0	0	0				
0:30	1	0	0				
0:45	0	0	0				
1:00	0	0	1				
1:15	1	0	0				
1:30	0	1	1				
1:45	2	0	0				
2:00	0	0	0				
2:15	1	0	0				
2:30	0	1	0				
2:45	0	0	0				
3:00	0	0	0				
3:15	0	0	0				
3:30	0	0	0				
3:45	0	0	0				
4:00	0	1	0				
4:15	1	0	0				
4:30	0	0	0				
4:45	0	0	0				
5:00	0	0	1				
5:15	0	0	0				
5:30	0	1	1				
5:45	3	3	2				
6:00	1	0	1				
6:15	0	0	1				
6:30	1	0	1				
6:45	2	2	1				
7:00	2	2	2				
7:15	6	4	2				
7:30	7	9	9				
7:45	3	3	4				
8:00	5	10	7				
8:15	6	4	4				
8:30	2	4	6				
8:45	12	8	8				
9:00	5	6	3				
9:15	3	9	6				
9:30	4	0	2				
9:45	1	6	2				
10:00	3	3	4				
10:15	1	1	4				
10:30	0	4	4				
10:45	2	2	6				
11:00	2	3	4				
11:15	4	5	2				
11:30	2	1	5				
11:45	7	3	4				
12:00	4	6	7				
12:15	7	2	3				
12:30	3	4	5				
12:45	7	6	7				
13:00	7	6	5				
13:15	3	3	1				
13:30	1	1	2				
13:45	3	5	8				
14:00	5	11	5				
14:15	5	4	3				
14:30	7	7	3				
14:45	5	3	8				
15:00	4	6	11				
15:15	10	11	9				
15:30	10	8	7				
15:45	11	10	3				
16:00	5	7	7				
16:15	4	5	6				
16:30	3	8	9				
16:45	10	9	12				
17:00	4	12	7				
17:15	6	8	9				
17:30	8	7	9				
17:45	7	9	4				
18:00	2	8	10				
18:15	7	9	4				
18:30	2	6	5				
18:45	4	4	6				
19:00	6	10	3				
19:15	6	2	5				
19:30	2	6	2				
19:45	2	1	7				
20:00	5	2	6				
20:15	1	5	10				
20:30	3	0	2				
20:45	1	3	4				
21:00	7	3	3				
21:15	4	1	2				
21:30	4	3	1				
21:45	1	2	3				
22:00	4	0	3				
22:15	0	1	2				
22:30	1	0	1				
22:45	1	2	0				
23:00	1	0	1				
23:15	0	2	0				
23:30	0	0	2				
23:45	1	0	0				



Site notes:

Vehicle Speed Summary

Saanich Engineering Department

Count Id: [R0482-01](#)

Filename: [Hampton Rd between Orillia St and Wascana St-Mar-2019.xlsm](#)

Location: Hampton Rd between Orillia St and Wascana St

Note: Orillia St and Wascana St

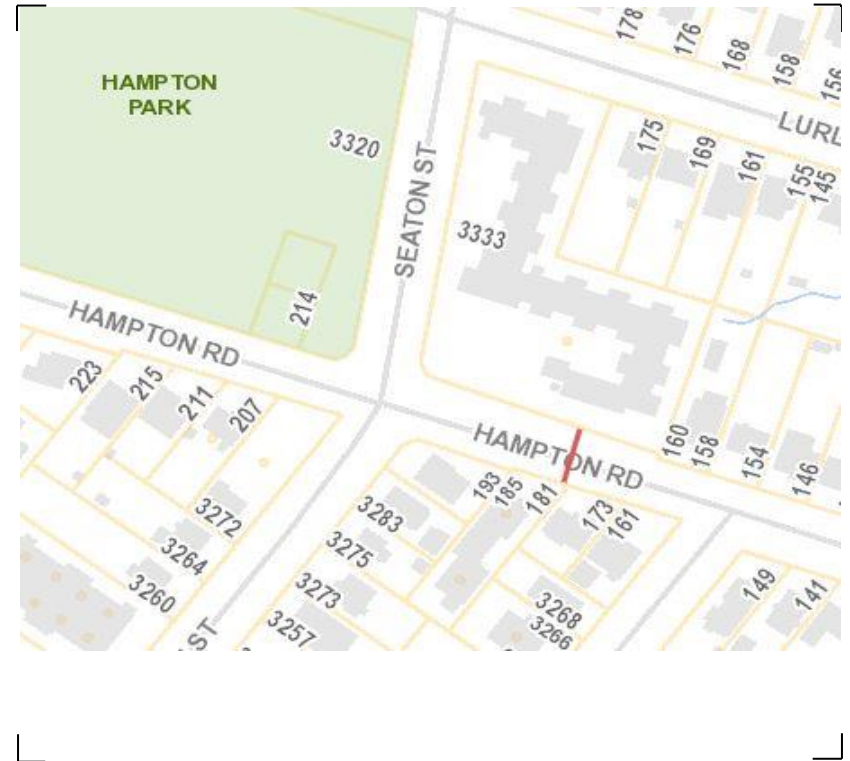
Direction: **East-West**

Dates: **March 11, 2019 To March 15, 2019**

Filtered data

AVG. SPEED	22 mph	35 km/h
50 % SPEED	22 mph	36 km/h
85 % SPEED	27 mph	43 km/h
95 % SPEED	30 mph	48 km/h

Location Map



Hampton Rd between Orillia St and Wascana St

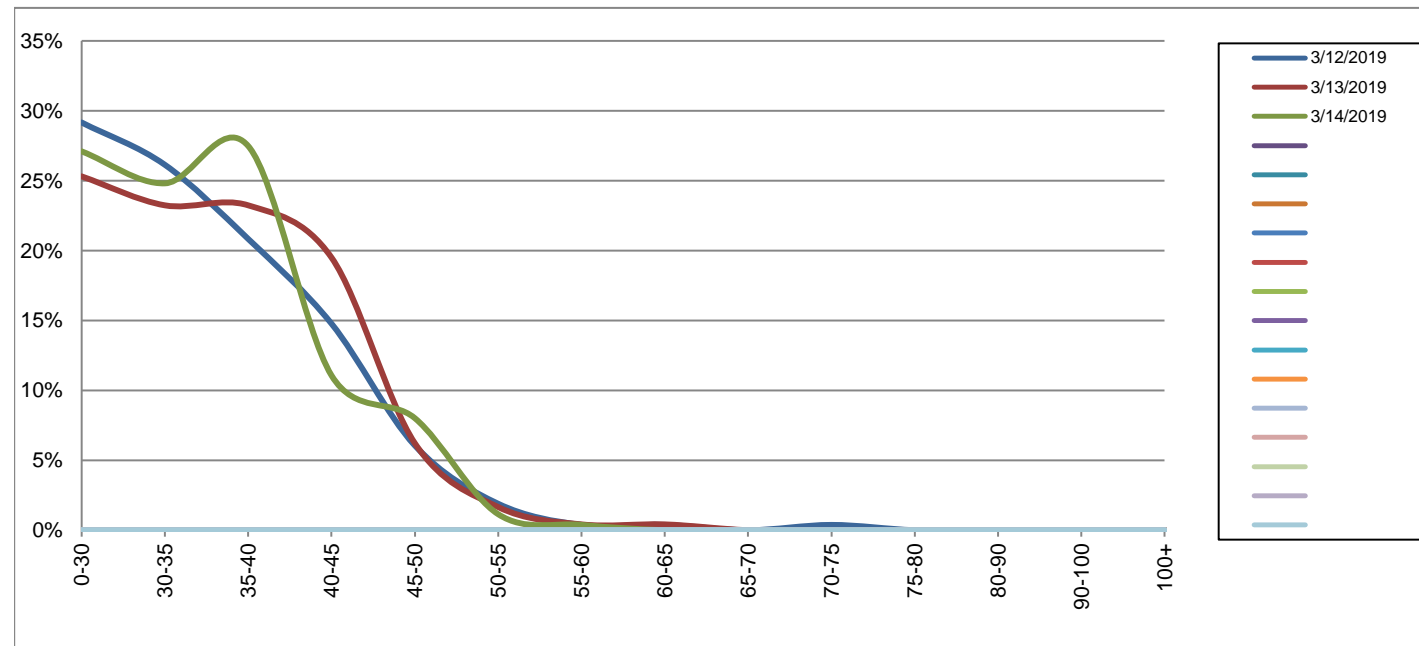
Westbound

March 12, 2019 to March 14, 2019

Daily Speed Bin Percentages															Daily Speed Bin Volumes														Total	Avg.
Bin #	1	2	3	4	5	6	7	8	9	10	11	12	13	14	1	2	3	4	5	6	7	8	9	10	11	12	13	14	Volume	Speed
Bin Speeds	0-30	30-35	35-40	40-45	45-50	50-55	55-60	60-65	65-70	70-75	75-80	80-90	90-100	100+	0-30	30-35	35-40	40-45	45-50	50-55	55-60	60-65	65-70	70-75	75-80	80-90	90-100	100+		
3/12/2019	29.2%	26.1%	20.8%	14.8%	6.1%	1.9%	0.4%	0.4%	0.0%	0.4%	0.0%	0.0%	0.0%	0.0%	77	69	55	39	16	5	1	1	0	1	0	0	0	0	264	32
3/13/2019	25.3%	23.2%	23.2%	19.5%	6.2%	1.7%	0.4%	0.4%	0.0%	0.0%	0.0%	0.0%	0.0%	0.0%	61	56	56	47	15	4	1	1	0	0	0	0	0	0	241	33
3/14/2019	27.1%	24.8%	27.5%	11.1%	8.0%	1.1%	0.4%	0.0%	0.0%	0.0%	0.0%	0.0%	0.0%	0.0%	71	65	72	29	21	3	1	0	0	0	0	0	0	0	262	32
Total	27.2%	24.8%	23.9%	15.0%	6.8%	1.6%	0.4%	0.3%	0.0%	0.1%	0.0%	0.0%	0.0%	0.0%	209	190	183	115	52	12	3	2	0	1	0	0	0	767	32	

Speed Data Summary

Bin #	1	2	3	4	5	6	7	8	9	10	11	12	13	14	Total
Bin Speeds	0-30	30-35	35-40	40-45	45-50	50-55	55-60	60-65	65-70	70-75	75-80	80-90	90-100	100+	
Survey Total	209	190	183	115	52	12	3	2	0	1	0	0	0	0	767
% Total	27.2%	24.8%	23.9%	15.0%	6.8%	1.6%	0.4%	0.3%	0.0%	0.1%	0.0%	0.0%	0.0%	0.0%	100%
Accumulated %	27.2%	52.0%	75.9%	90.9%	97.7%	99.2%	99.6%	99.9%	99.9%	100.0%	100.0%	100.0%	100.0%	100%	
Inverse Accum. %	72.8%	48.0%	24.1%	9.1%	2.3%	0.8%	0.4%	0.1%	0.1%	0.0%	0.0%	0.0%	0.0%	0.0%	
Average Speed	32 KM/H														



Site notes:

Hampton Rd between Orillia St and Wascana St

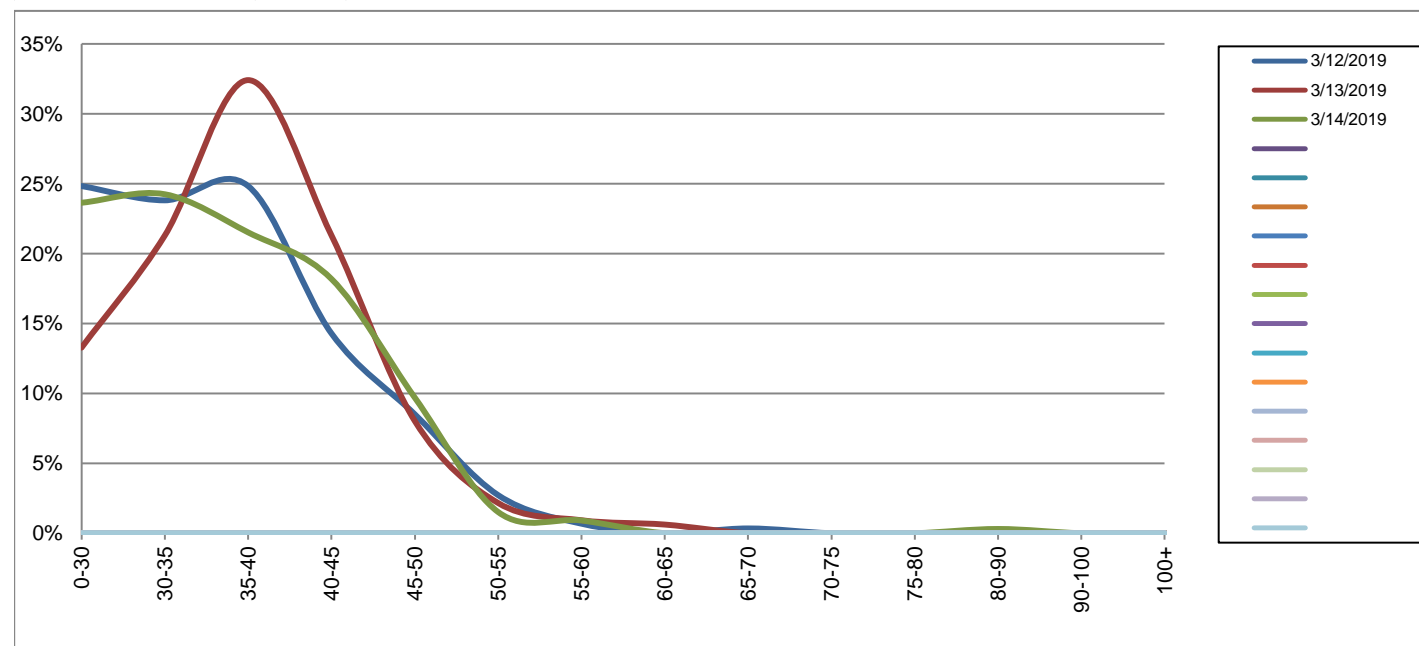
Eastbound

March 12, 2019 to March 14, 2019

Daily Speed Bin Percentages															Daily Speed Bin Volumes														Total	Avg.
Bin #	1	2	3	4	5	6	7	8	9	10	11	12	13	14	1	2	3	4	5	6	7	8	9	10	11	12	13	14	Volume	Speed
Bin Speeds	0-30	30-35	35-40	40-45	45-50	50-55	55-60	60-65	65-70	70-75	75-80	80-90	90-100	100+	0-30	30-35	35-40	40-45	45-50	50-55	55-60	60-65	65-70	70-75	75-80	80-90	90-100	100+		
3/12/2019	24.8%	23.8%	24.8%	14.3%	8.5%	2.7%	0.7%	0.0%	0.3%	0.0%	0.0%	0.0%	0.0%	0.0%	73	70	73	42	25	8	2	0	1	0	0	0	0	0	294	33
3/13/2019	13.3%	21.3%	32.4%	21.3%	8.0%	2.2%	0.9%	0.6%	0.0%	0.0%	0.0%	0.0%	0.0%	0.0%	43	69	105	69	26	7	3	2	0	0	0	0	0	0	324	36
3/14/2019	23.6%	24.2%	21.5%	18.2%	9.7%	1.5%	0.9%	0.0%	0.0%	0.0%	0.0%	0.3%	0.0%	0.0%	78	80	71	60	32	5	3	0	0	0	0	1	0	0	330	33
Total	20.5%	23.1%	26.3%	18.0%	8.8%	2.1%	0.8%	0.2%	0.1%	0.0%	0.0%	0.1%	0.0%	0.0%	194	219	249	171	83	20	8	2	1	0	0	1	0	0	948	34

Speed Data Summary

Bin #	1	2	3	4	5	6	7	8	9	10	11	12	13	14	Total
Bin Speeds	0-30	30-35	35-40	40-45	45-50	50-55	55-60	60-65	65-70	70-75	75-80	80-90	90-100	100+	
Survey Total	194	219	249	171	83	20	8	2	1	0	0	1	0	0	948
% Total	20.5%	23.1%	26.3%	18.0%	8.8%	2.1%	0.8%	0.2%	0.1%	0.0%	0.0%	0.1%	0.0%	0.0%	100%
Accumulated %	20.5%	43.6%	69.8%	87.9%	96.6%	98.7%	99.6%	99.8%	99.9%	99.9%	99.9%	100.0%	100.0%	100%	
Inverse Accum. %	79.5%	56.4%	30.2%	12.1%	3.4%	1.3%	0.4%	0.2%	0.1%	0.1%	0.1%	0.0%	0.0%	0.0%	
Average Speed	34 KM/H														



Site notes:

Hampton Rd between Orillia St and Wascana St

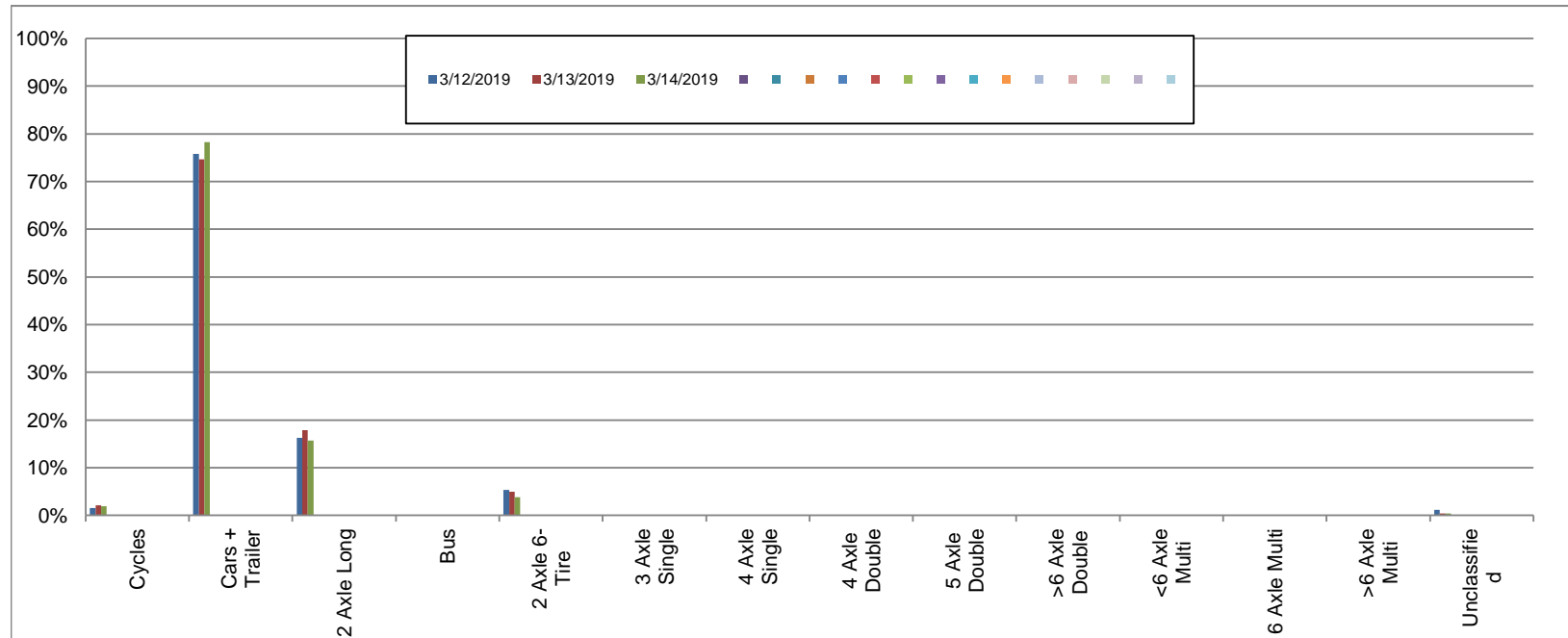
Westbound

March 12, 2019 to March 14, 2019

Daily Class Bin Percentages															Daily Class Bin Volumes											Total Volume				
Bin #	1	2	3	4	5	6	7	8	9	10	11	12	13	14	1	2	3	4	5	6	7	8	9	10	11		12	13	14	
Bin Class	Cycles	Cars + Trailer	2 Axle Long	Bus	2 Axle 6-Tire	3 Axle Single	4 Axle Single	4 Axle Double	5 Axle Double	>6 Axle Double	<6 Axle Multi	6 Axle Multi	>6 Axle Multi	Unclassified	Cycles	Cars + Trailer	2 Axle Long	Bus	2 Axle 6-Tire	3 Axle Single	4 Axle Single	4 Axle Double	5 Axle Double	>6 Axle Double	<6 Axle Multi	6 Axle Multi	>6 Axle Multi	Unclassified		
3/12/2019	1.5%	75.8%	16.3%	0.0%	5.3%	0.0%	0.0%	0.0%	0.0%	0.0%	0.0%	0.0%	0.0%	1.1%	4	200	43	0	14	0	0	0	0	0	0	0	0	0	3	264
3/13/2019	2.1%	74.7%	17.8%	0.0%	5.0%	0.0%	0.0%	0.0%	0.0%	0.0%	0.0%	0.0%	0.0%	0.4%	5	180	43	0	12	0	0	0	0	0	0	0	0	0	1	241
3/14/2019	1.9%	78.2%	15.6%	0.0%	3.8%	0.0%	0.0%	0.0%	0.0%	0.0%	0.0%	0.0%	0.0%	0.4%	5	205	41	0	10	0	0	0	0	0	0	0	0	0	1	262
Total	1.8%	76.3%	16.6%	0.0%	4.7%	0.0%	0.0%	0.0%	0.0%	0.0%	0.0%	0.0%	0.0%	0.7%	14	585	127	0	36	0	0	0	0	0	0	0	0	0	5	767

Class Data Summary

Bin #	1	2	3	4	5	6	7	8	9	10	11	12	13	14	Total Volume
Bin Class	Cycles	Cars + Trailer	2 Axle Long	Bus	2 Axle 6-Tire	3 Axle Single	4 Axle Single	4 Axle Double	5 Axle Double	>6 Axle Double	<6 Axle Multi	6 Axle Multi	>6 Axle Multi	Unclassified	Total Volume
Survey Total	14	585	127	0	36	0	0	0	0	0	0	0	0	5	767
% Total	1.8%	76.3%	16.6%	0.0%	4.7%	0.0%	0.0%	0.0%	0.0%	0.0%	0.0%	0.0%	0.0%	0.7%	100%
Accumulated %	1.8%	78.1%	94.7%	94.7%	99.3%	99.3%	99.3%	99.3%	99.3%	99.3%	99.3%	99.3%	99.3%	100.0%	
Inv. Accum. %	98.2%	21.9%	5.3%	5.3%	0.7%	0.7%	0.7%	0.7%	0.7%	0.7%	0.7%	0.7%	0.7%	0.0%	



Classification Descriptions

Bin #	Bin Description
1	Motorcycles
2	Passenger cars, including those with recreational trailers
3	2-axle pick-ups, vans, and RVs, including those with recreational trailers
4	Buses
5	2-axle, 6-tire single units
6	3-axle single units
7	4-axle single units
8	3-axle or 4-axle double unit
9	5-axle double unit
10	6-, 7-, or 8-axle double unit
11	5-axle multiple unit
12	6-axle multiple unit
13	7-or-more-axle multiple unit
14	Vehicles that could not be classified

Site notes:

Hampton Rd between Orillia St and Wascana St

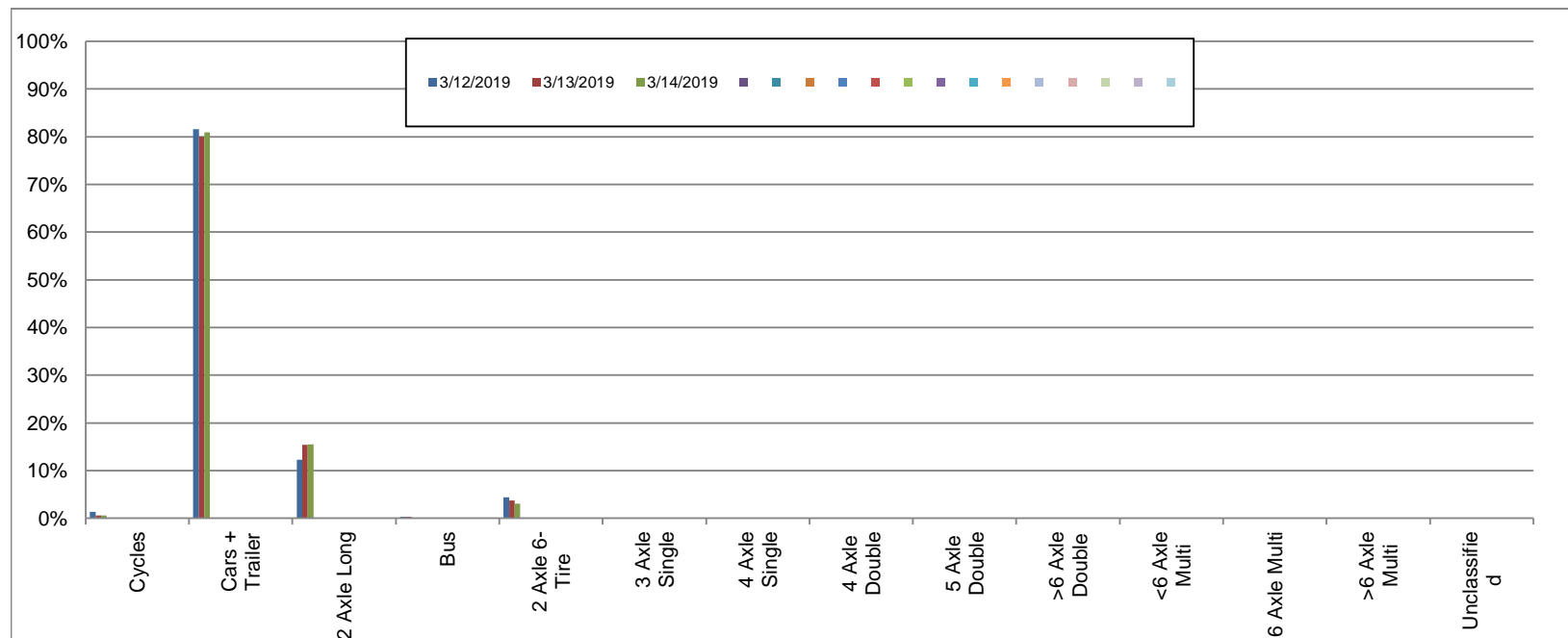
Eastbound

March 12, 2019 to March 14, 2019

Daily Class Bin Percentages															Daily Class Bin Volumes														
Bin #	1	2	3	4	5	6	7	8	9	10	11	12	13	14	1	2	3	4	5	6	7	8	9	10	11	12	13	14	Total Volume
Bin Class	Cycles	Cars + Trailer	2 Axle Long	Bus	2 Axle 6-Tire	3 Axle Single	4 Axle Single	4 Axle Double	5 Axle Double	>6 Axle Double	<6 Axle Multi	6 Axle Multi	>6 Axle Multi	Unclassified	Cycles	Cars + Trailer	2 Axle Long	Bus	2 Axle 6-Tire	3 Axle Single	4 Axle Single	4 Axle Double	5 Axle Double	>6 Axle Double	<6 Axle Multi	6 Axle Multi	>6 Axle Multi	Unclassified	
3/12/2019	1.4%	81.6%	12.2%	0.3%	4.4%	0.0%	0.0%	0.0%	0.0%	0.0%	0.0%	0.0%	0.0%	0.0%	4	240	36	1	13	0	0	0	0	0	0	0	0	0	294
3/13/2019	0.6%	79.9%	15.4%	0.3%	3.7%	0.0%	0.0%	0.0%	0.0%	0.0%	0.0%	0.0%	0.0%	0.0%	2	259	50	1	12	0	0	0	0	0	0	0	0	0	324
3/14/2019	0.6%	80.9%	15.5%	0.0%	3.0%	0.0%	0.0%	0.0%	0.0%	0.0%	0.0%	0.0%	0.0%	0.0%	2	267	51	0	10	0	0	0	0	0	0	0	0	0	330
Total	0.8%	80.8%	14.5%	0.2%	3.7%	0.0%	0.0%	0.0%	0.0%	0.0%	0.0%	0.0%	0.0%	0.0%	8	766	137	2	35	0	0	0	0	0	0	0	0	948	

Class Data Summary

Bin #	1	2	3	4	5	6	7	8	9	10	11	12	13	14	Total Volume
Bin Class	Cycles	Cars + Trailer	2 Axle Long	Bus	2 Axle 6-Tire	3 Axle Single	4 Axle Single	4 Axle Double	5 Axle Double	>6 Axle Double	<6 Axle Multi	6 Axle Multi	>6 Axle Multi	Unclassified	Total Volume
Survey Total	8	766	137	2	35	0	0	0	0	0	0	0	0	0	948
% Total	0.8%	80.8%	14.5%	0.2%	3.7%	0.0%	0.0%	0.0%	0.0%	0.0%	0.0%	0.0%	0.0%	0.0%	100%
Accumulated %	0.8%	81.6%	96.1%	96.3%	100.0%	100.0%	100.0%	100.0%	100.0%	100.0%	100.0%	100.0%	100.0%	100.0%	
Inv. Accum. %	99.2%	18.4%	3.9%	3.7%	0.0%	0.0%	0.0%	0.0%	0.0%	0.0%	0.0%	0.0%	0.0%	0.0%	



Classification Descriptions

Bin #	Bin Description
1	Motorcycles
2	Passenger cars, including those with recreational trailers
3	2-axle pick-ups, vans, and RVs, including those with recreational trailers
4	Buses
5	2-axle, 6-tire single units
6	3-axle single units
7	4-axle single units
8	3-axle or 4-axle double unit
9	5-axle double unit
10	6-, 7-, or 8-axle double unit
11	5-axle multiple unit
12	6-axle multiple unit
13	7-or-more-axle multiple unit
14	Vehicles that could not be classified

Site notes: